



## SAW BANDPASS FILTER

**PART NO.: ACTFH024-2442SA-1109**

<b>Product Type:</b>	<b>Customer:</b>
SAW filter for WIFI	
	<b>Customer Part NO.:</b>
	<b>Issued Date:</b>

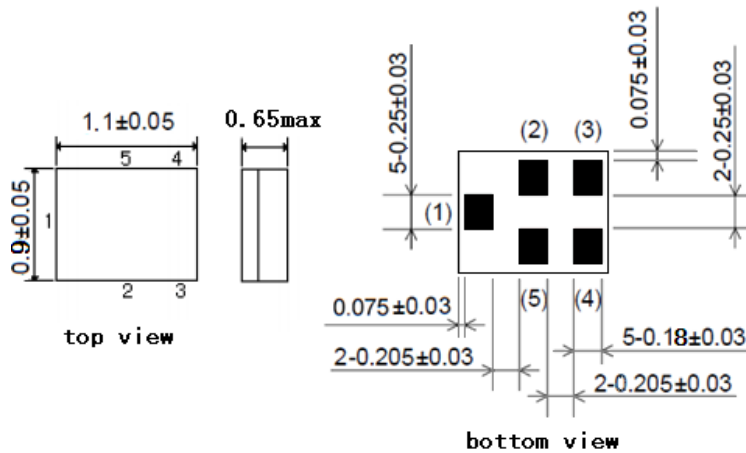
## Features

SAW filter for WIFI.

- 1 High stability and reliability with good performance.
- 2 Narrow and sharp pass band characteristics. RoHS compatible.
- 3 Low insertion loss and deep stop band attenuation for interference.
- 4 Low – loss SAW filter for WIFI transmission.
- 5 Package size 1.1mm\*0.9mm

## Package Dimensions

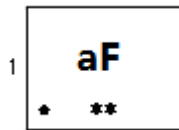
Ceramic Package: Unit: mm



## Pin Configuration

1	Input
4	Output
2,3,5	Ground

## Marking



Top View, Laser Marking

"aF": Part number

"." Dot marking, indicates input 1

"1" Terminal1

The first " \* ": Month Code (The code shown below varies in a 4-year-cycle)

Code	1	2	3	4	5	6	7	8	9	10	11	12
2016/2020	n	p	q	r	s	t	u	v	w	x	y	z
2017/2021	A	B	C	D	E	F	G	H	J	K	L	M
2018/2022	N	P	Q	R	S	T	U	V	W	X	Y	Z
2019/2023	a	b	c	d	e	f	g	h	i	j	k	m

The second " \* ": Date Code

data	1st	2nd	3rd	4th	5th	6th	7th	8th	9th	10th	
code	A	B	C	D	E	F	G	H	J	K	
data	11th	12th	13th	14th	15th	16th	17th	18th	19th	20th	
code	L	M	N	P	Q	R	S	T	U	V	
data	21st	22nd	23rd	24th	25th	26th	27th	28th	29th	30th	31st
code	W	X	Y	Z	a	b	d	e	f	g	h


## Maximum Ratings

Rating		Value	Unit
DC Voltage (between any Terminals)	$V_{DC}$	10	V
RF Power (in BW)	$P$	29	dBm
Operating Temperature Range	$T_A$	-30 ~ +85	°C
Storage Temperature Range	$T_{stg}$	-40 ~ +85	°C
ESD Voltage (HB)	$V_{ESD}$	>150	V
Moisture Sensitivity Levels	$MSL$	2A	

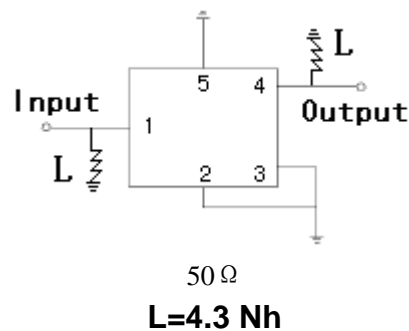
## Electrical Characteristics:

Item		Minimum	Typical	Maximum	Unit	
Insertion Loss	$IL$					
		2403 ... 2471 MHz		1.2	2.2	dB
		2458 ... 2476 MHz		1.2	1.8	dB
	2463 ... 2481 MHz		1.6	2.5	dB	
Passband Ripple	$Pr$					
		2403 ... 2481 MHz		0.8	2.0	dB
VSWR	$V_{swr}$					
		2401 ... 2483 MHz		1.2	2.0	
Absolute Attenuation	$\alpha$					
		800 ... 2000.00 MHz	25	27		dB
		2000.00 ... 2300.00 MHz	25	27		dB
		2300.00 ... 2370.00 MHz	27	30		dB
		2370.00 ... 2380.00 MHz	18	30		dB
		2500.00 ... 2502.00 MHz	7	42		dB
		2502.00 ... 2570.00 MHz	12	41		dB
		2570.00 ... 2620.00 MHz	29	34		dB
		2620.00 ... 2690.00MHz	26	31		dB
		2690.00 ... 4800.00 MHz	25	29		dB
		4800.00 ... 5825.00 MHz	27	35		dB
		7200.00 ... 7500.00 MHz	30	42		dB
Input / Output Impedance (Nominal)		50Ω//4.3nH				

 RoHS Compliant

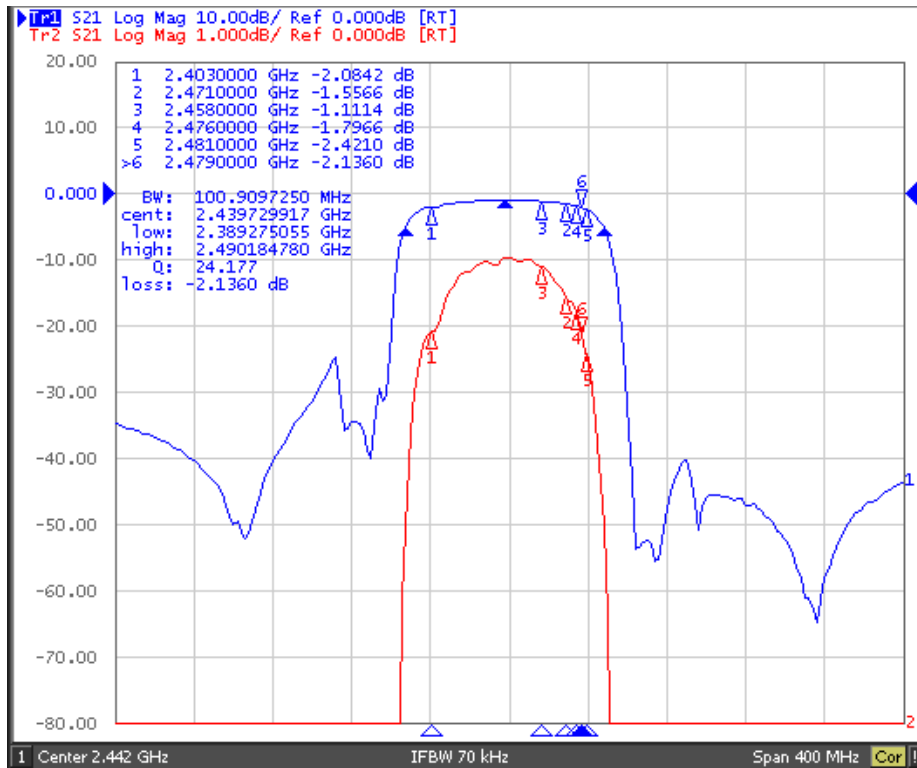
 Electrostatic Sensitive Device

## Test Circuit

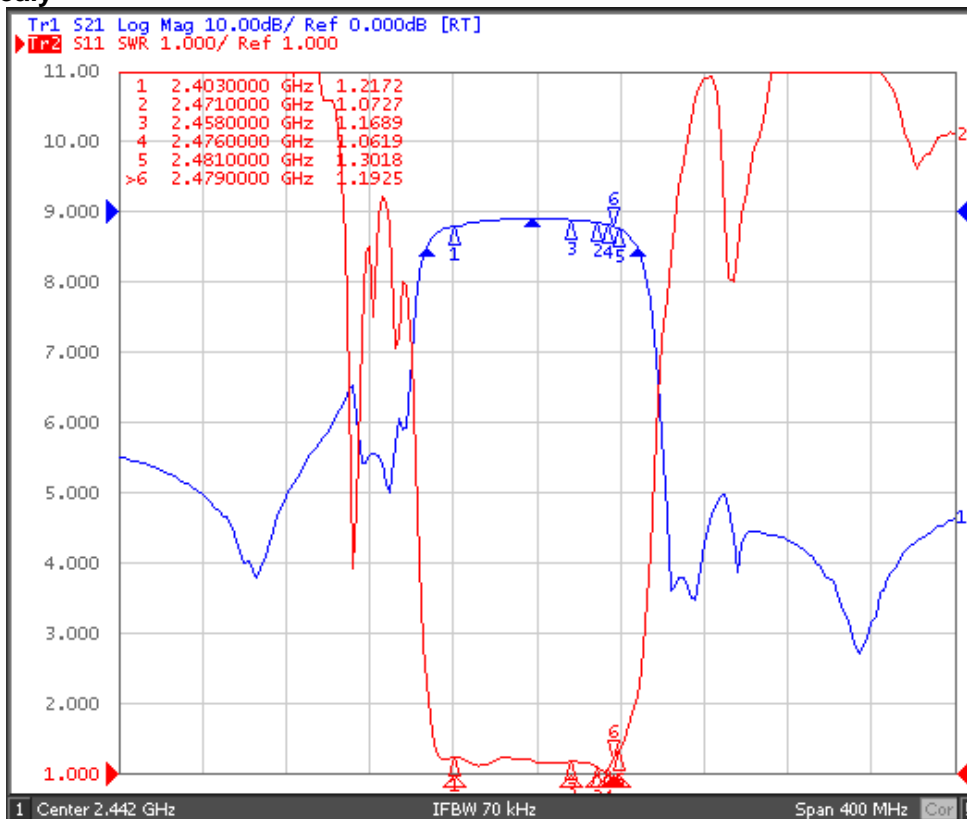


## Typical Frequency Response

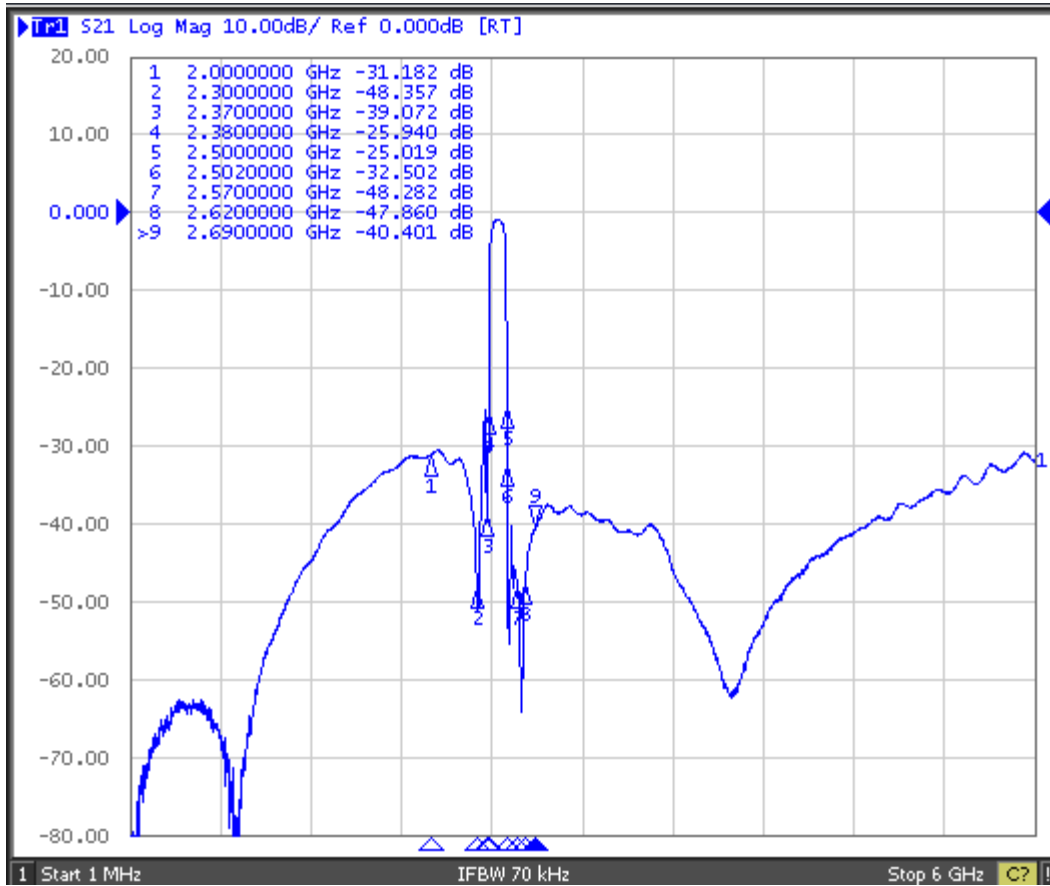
### S21



### S11 Group Delay



Far side



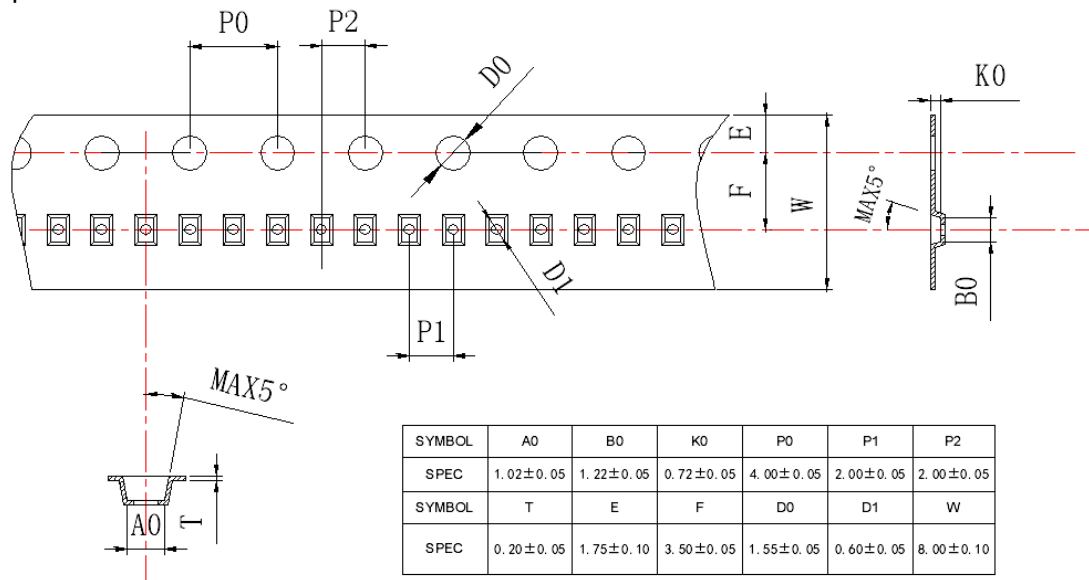
### Stability Characteristics

Item No.	Test Item	STD Reference	Test Conditions	per lot
	Preconditioning	JESD22-A113	1) Temperature Cycling, 5 cycles -40°C to 85°C; 2) Bake, 24 hrs @85±5°C; 3)Moisture Soak, Soak time and conditions per IPC/JEDEC J-STD-020 based on device MSL level; 4) Reflow, 3 reflow cycles; 5) Drying, Room ambient temperature.	All behind
1	Temperature Cycling	JESD22-A104	-40°C / +85°C,5°C/min,15min dwell,<1 min transfer time,500cycles	3*25 pcs
2	High Temperature Storage	JESD22-A103	Temperature=85°C, 1000 hours.	3*25 pcs
3	Temperature Humidity no bias	JEDEC Std A101-B	85°C 85%RH 240 hours	3*25 pcs
4	Human Body Mode ESD	JESD22-A114	Ta=25°C, ≥100V	3 pcs
5	Charge Device Mode ESD	JESD22-C101	Ta=25°C, ≥100V	3 pcs
6	Solderability	JESD22-B102	Wetting: 245°C, 5s.	22 pcs
7	Drop Test	JESD22-B111	1500 Gs, 0.5 millisecond duration, half-sine pulse.	20 pcs
8	Mechanical Shock	JESD-47	Shock pulse of 1500g with pulse duration of 0.5+/-0.1msec (X ,Y & Z); 5 shocks per axis.	3*25 pcs

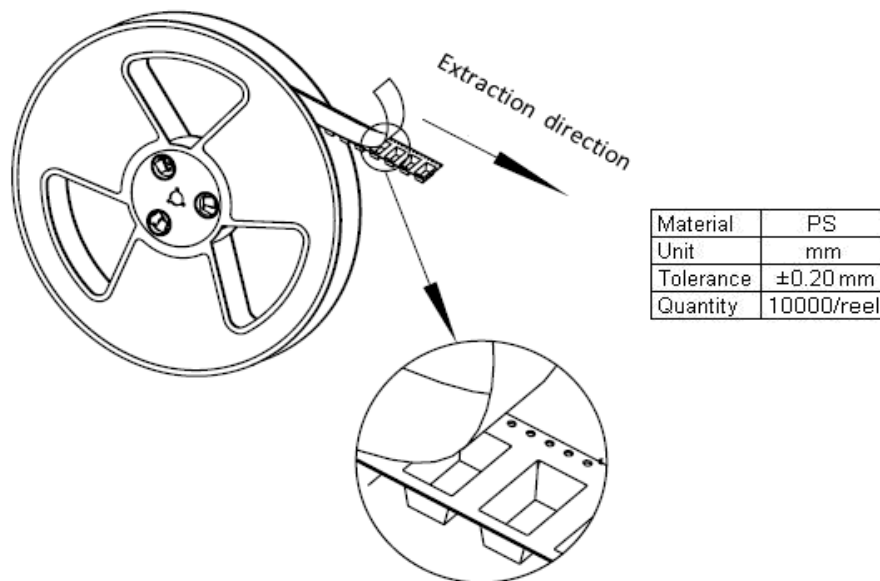
**Requirements:** The SAW filer shall remain within the electrical specifications after tests.

### Packing Information

#### Carrier Tape



#### Reel Dimensions



#### Outer Packing

Type	Quantity	Dimension	Description	Weight
Carton Box I	100000	240×210×285	anti-static plastic bag & carton box 1 reel / bag	2.15
Carton Box II	300000	470×310×285	10bags / box (100000 pcs) 30 bags / box (300000pcs)	6.22

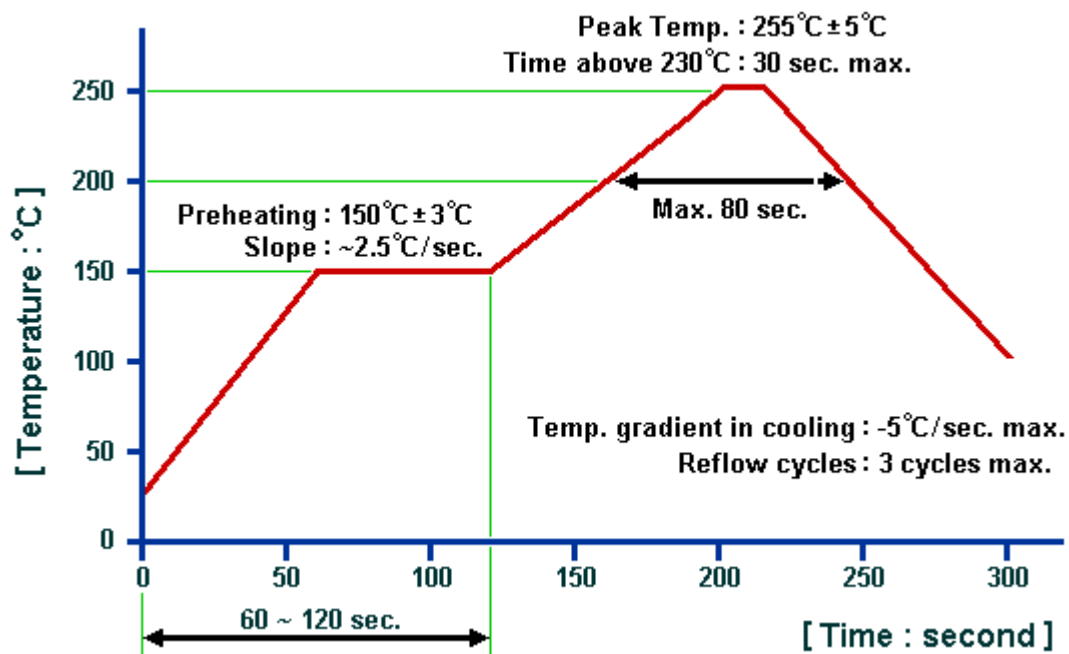
Unit: mm

Unit: kg

## Remarks

- SAW devices should not be used in any type of fluid such as water, oil, organic solvent, etc.
- Be certain not to apply voltage exceeding the rated voltage of components.
- Do not operate outside the recommended operating temperature range of components.
- Sudden change of temperature shall be avoided, deterioration of the characteristics can occur.
- Be careful of soldering temperature and duration of components when soldering.
- Do not place soldering iron on the body of components.
- Be careful not to subject the terminals or leads of components to excessive force.
- SAW devices are electrostatic sensitive. Please avoid static voltage during operation and storage.
- Ultrasonic cleaning shall be avoided. Ultrasonic vibration may cause destruction of components.

## Recommended Soldering Profile



## © ACT 2018. All Rights Reserved.

1. The specifications of this device are subject to change or obsolescence without notice.
2. Typically, equipment utilizing this device requires emissions testing and government approval, which is the responsibility of the equipment manufacturer.
3. Our liability is only assumed for the Surface Acoustic Wave (SAW) component(s) per se, not for applications, processes and circuits implemented within components or assemblies.